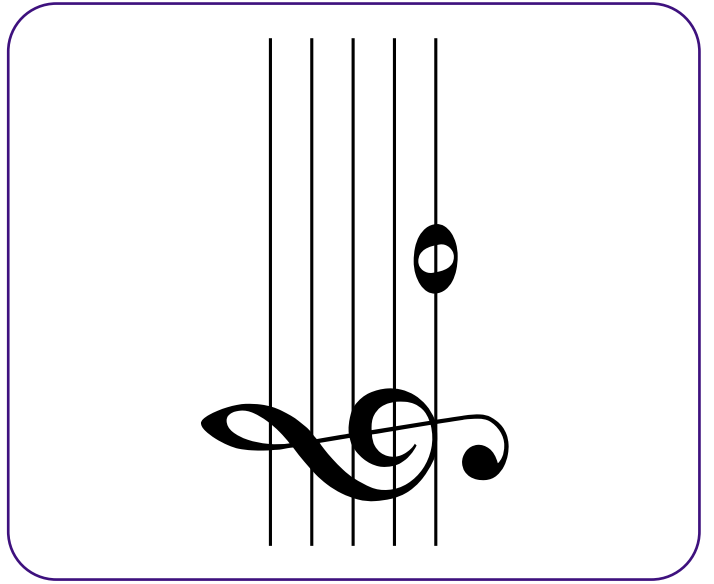
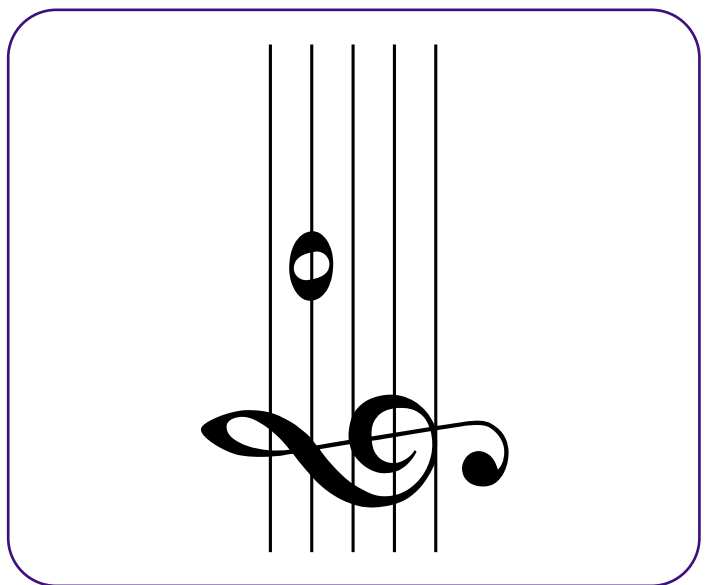
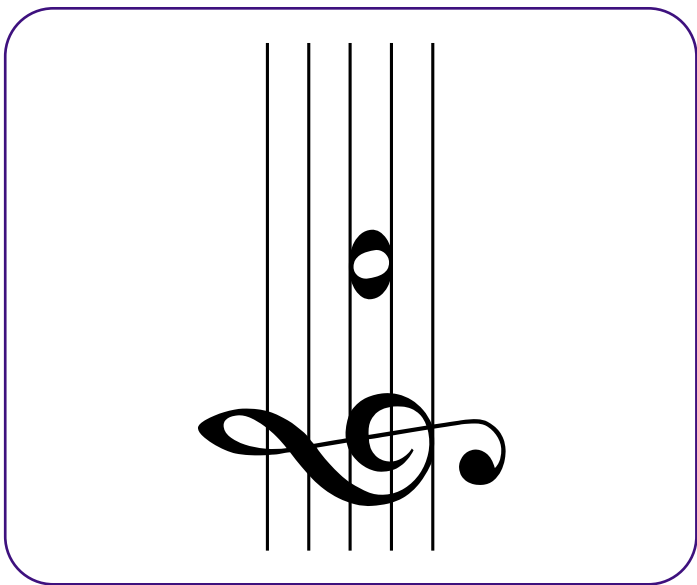
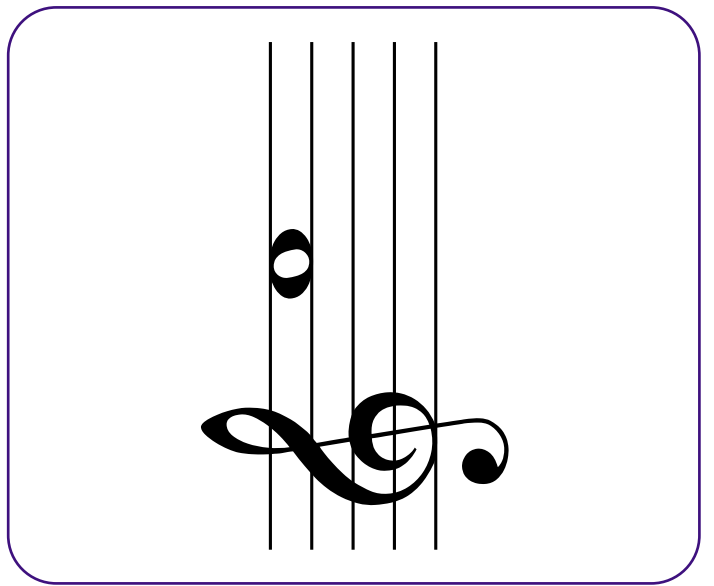
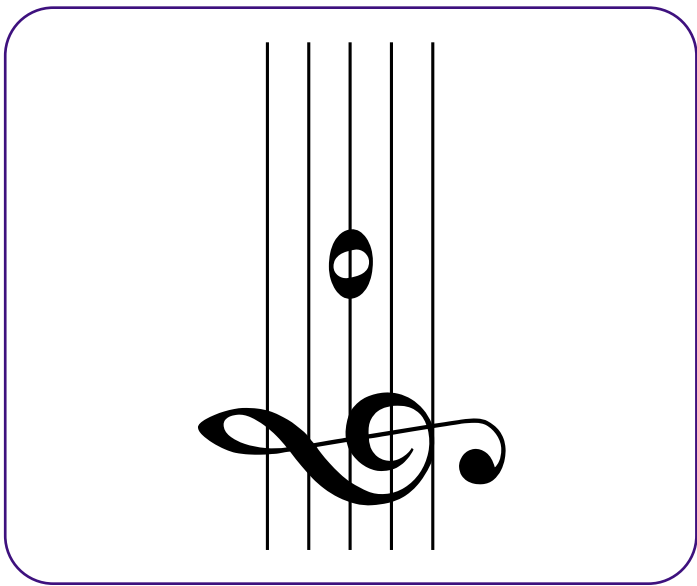
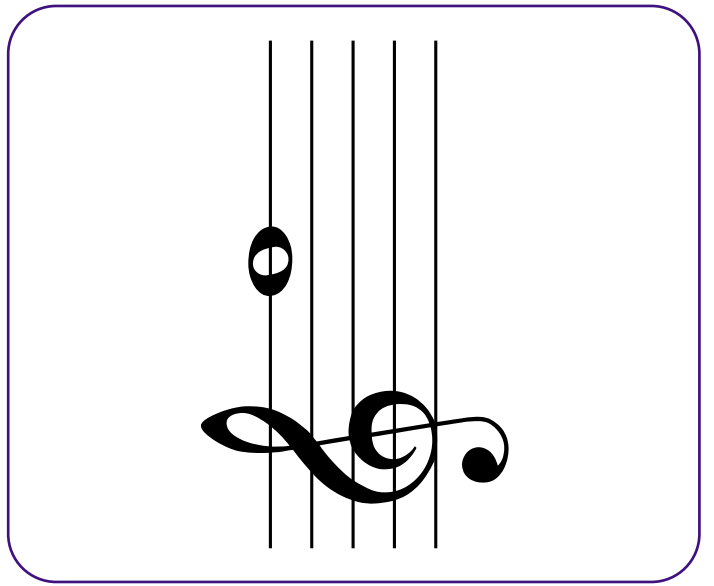
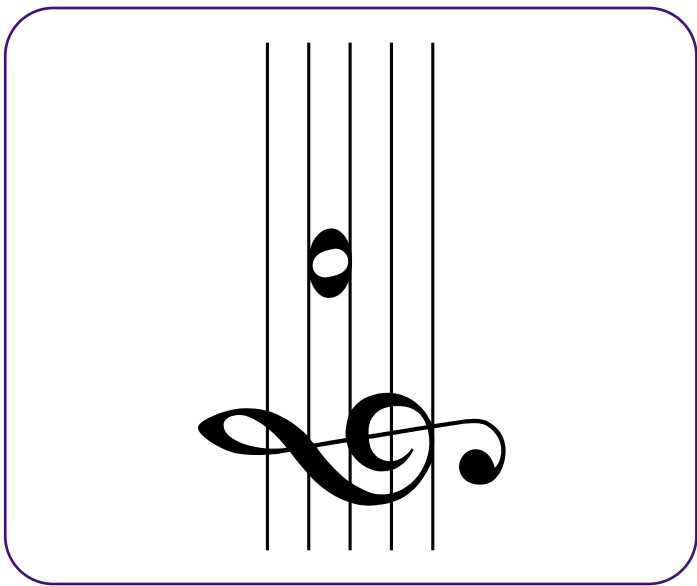


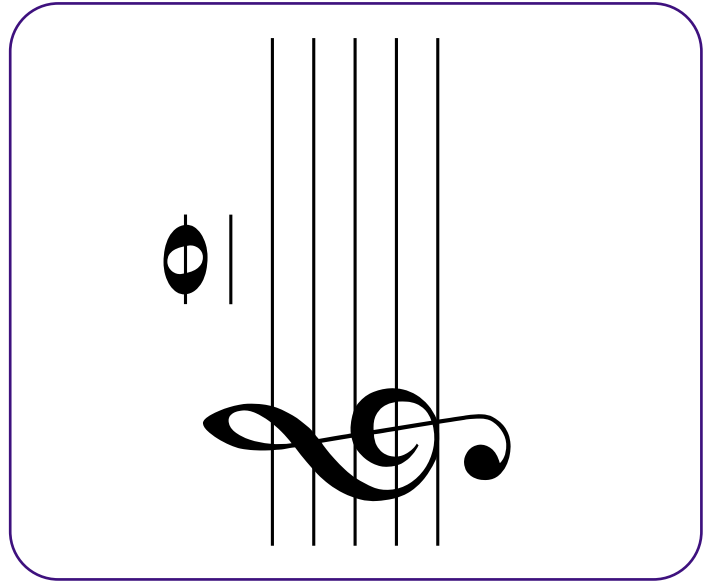
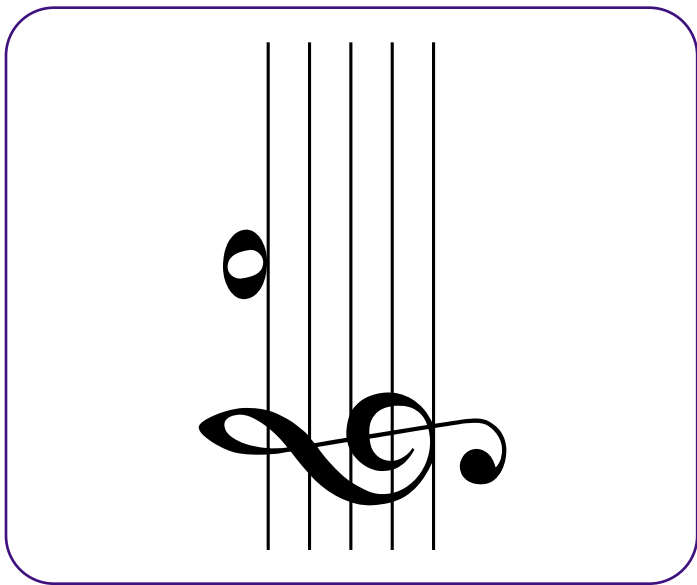
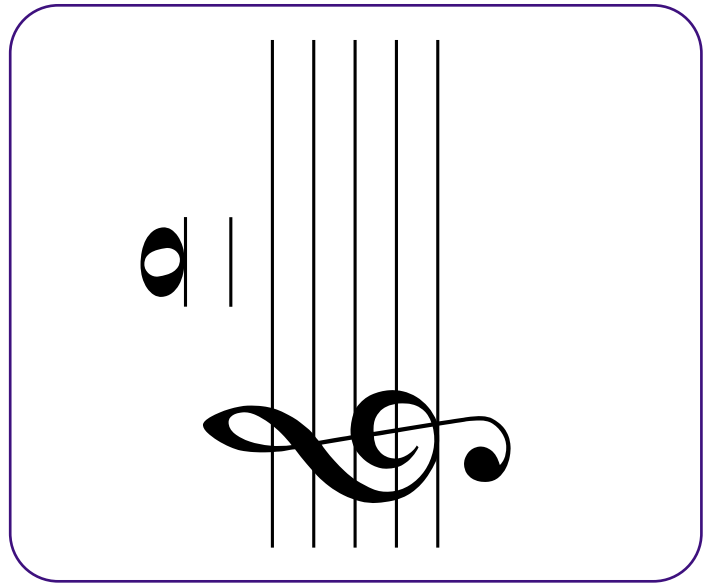
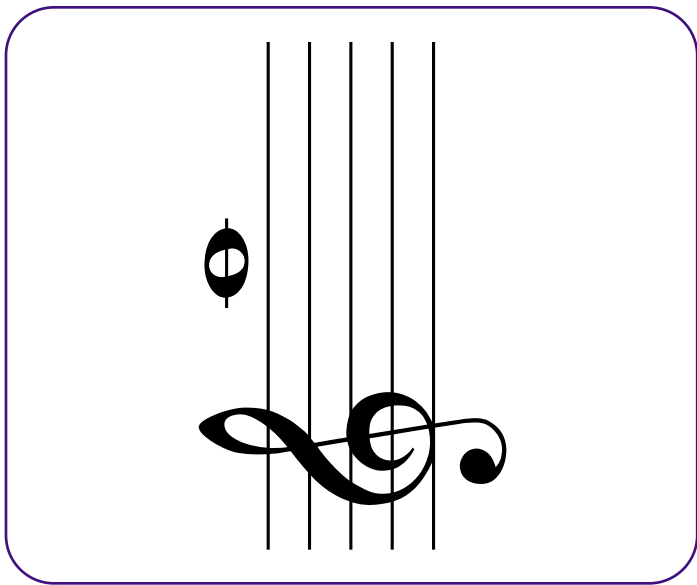
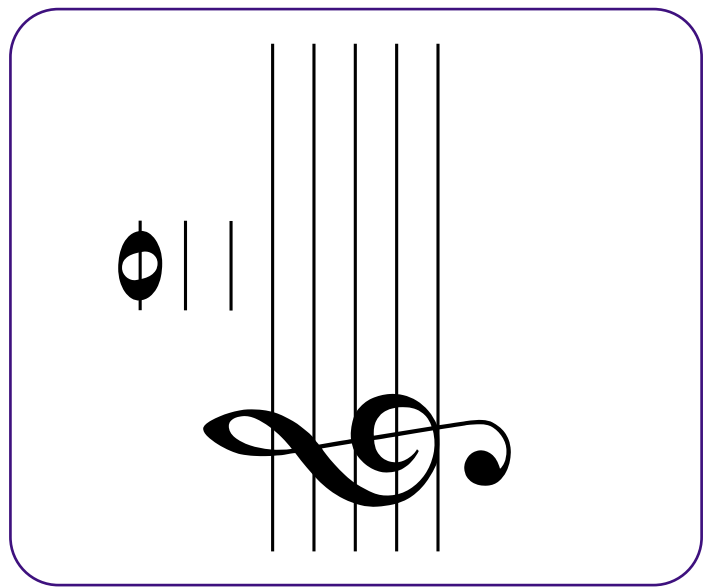
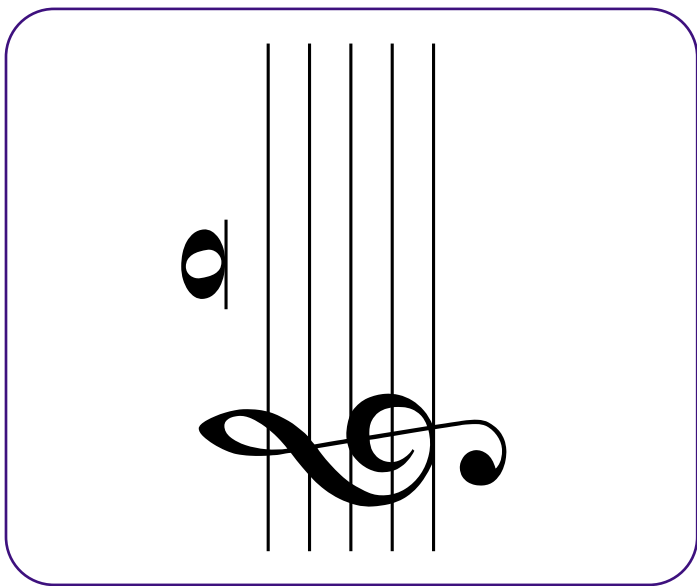
Treble Clef  
**Flash Cards**



[www.makingmusicfun.net](http://www.makingmusicfun.net)






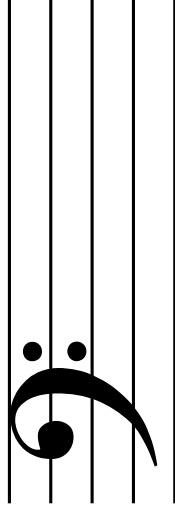

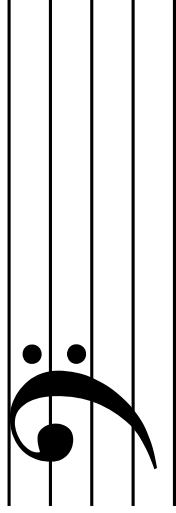

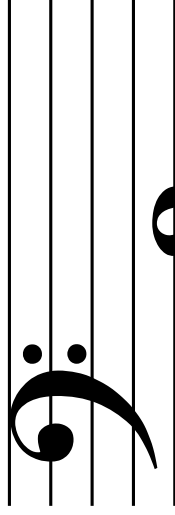

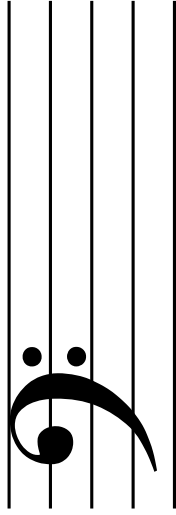


# Answer Key

A musical staff with a treble clef. The notes are placed on the lines and spaces of the staff as follows: C (first line), D (first space), E (second line), F (second space), G (third line), A (third space), B (fourth line), C (fourth space), D (fifth line), E (first space), F (second line), G (second space), A (third line), B (third space), C (fourth line), D (fourth space), E (fifth line).

C D E F G A B C D E F G A B C D E


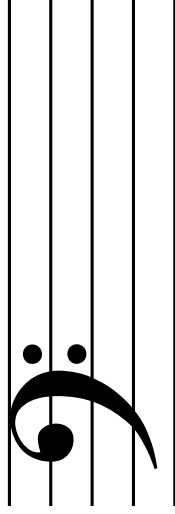


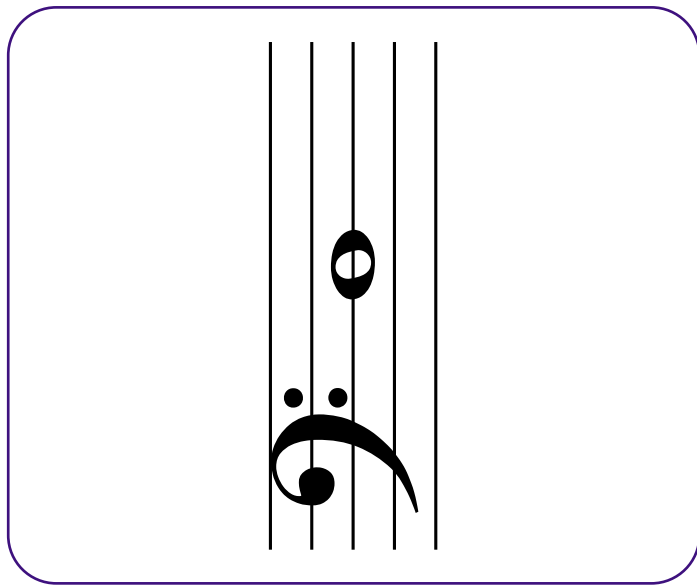
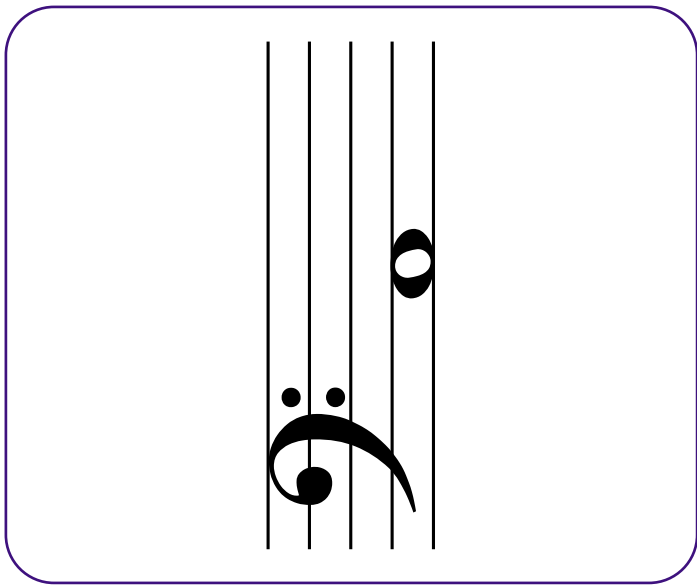
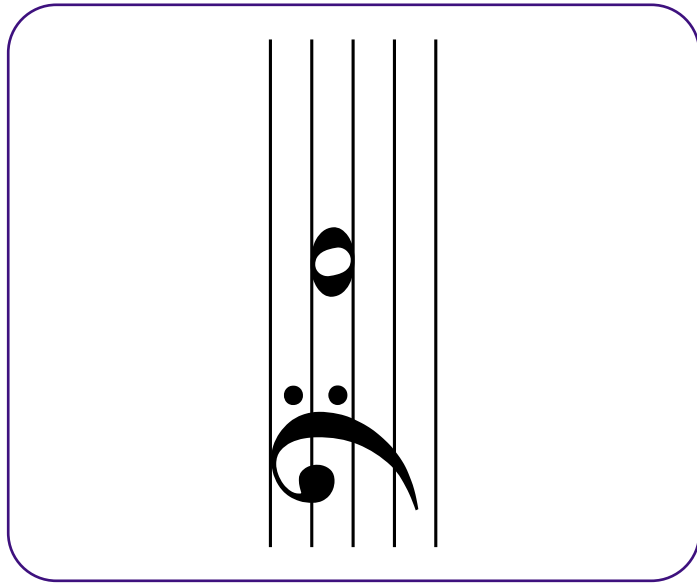
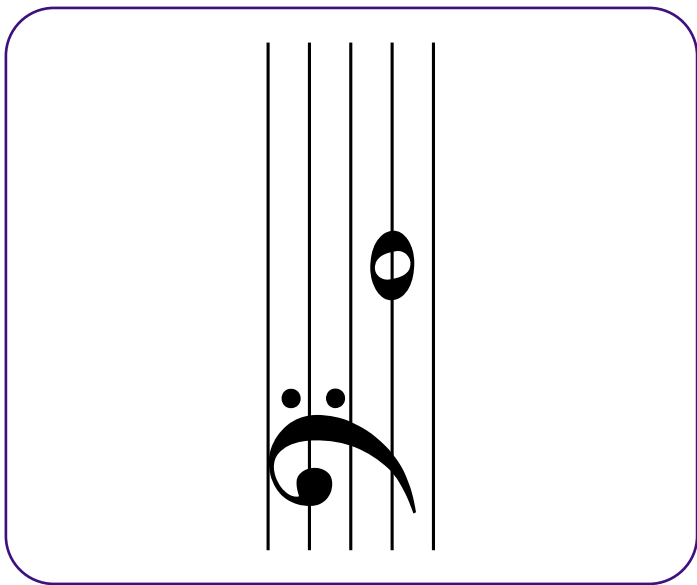
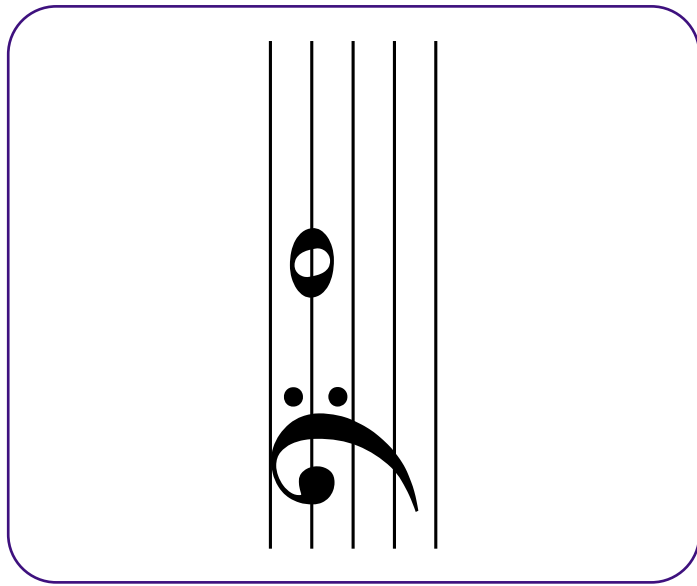
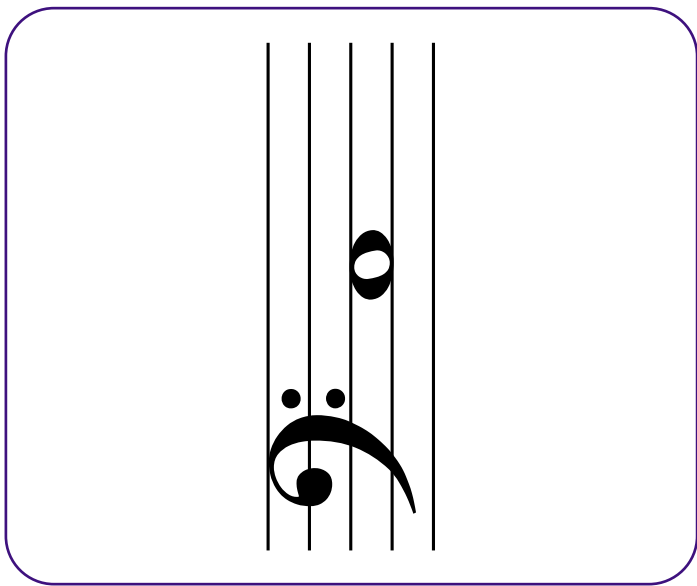


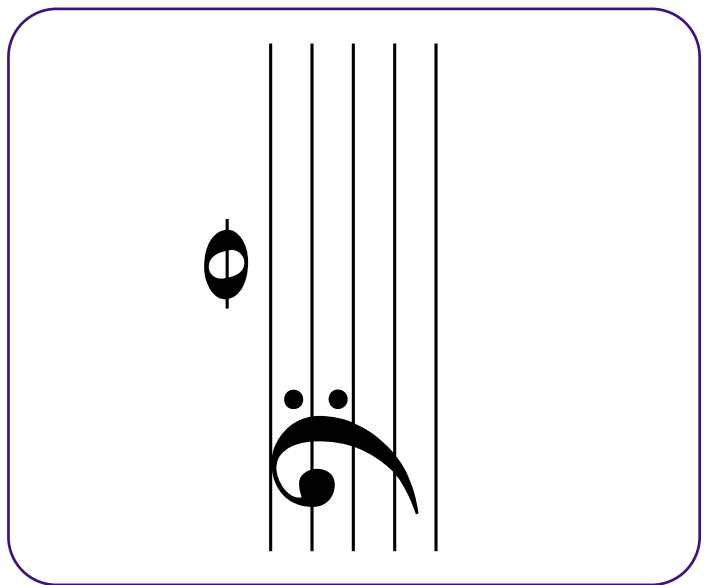
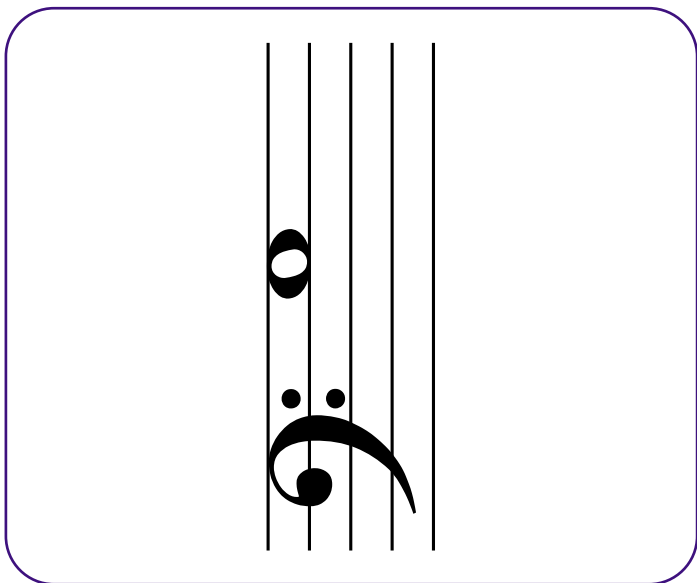
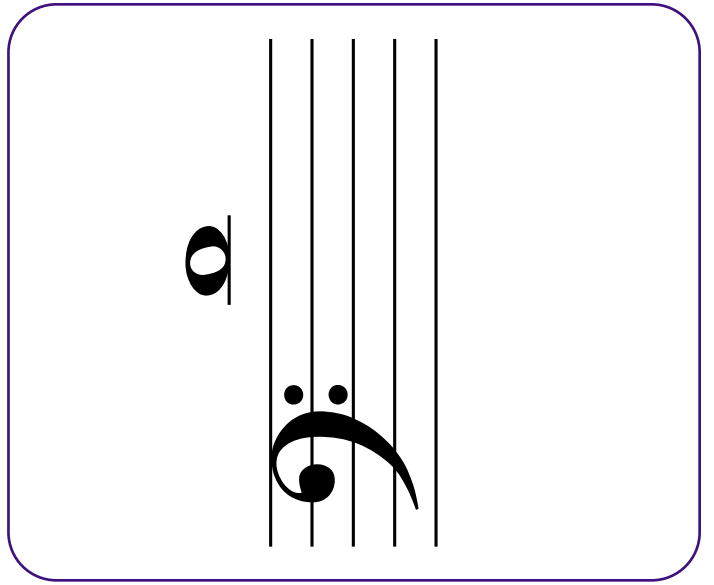
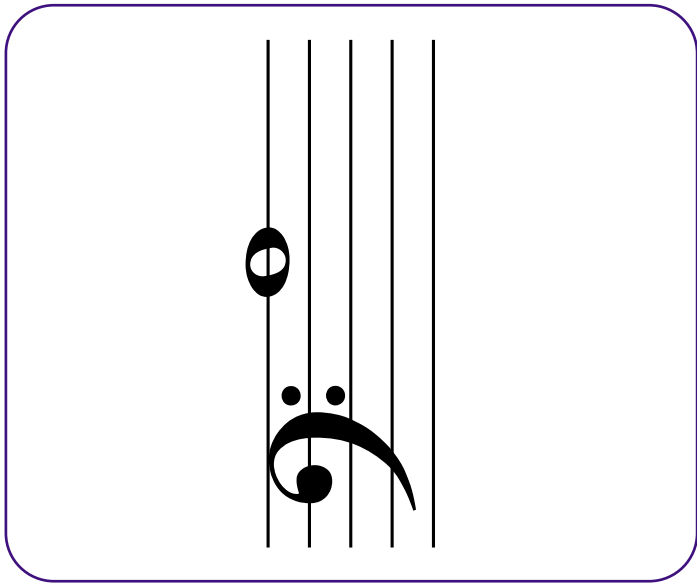
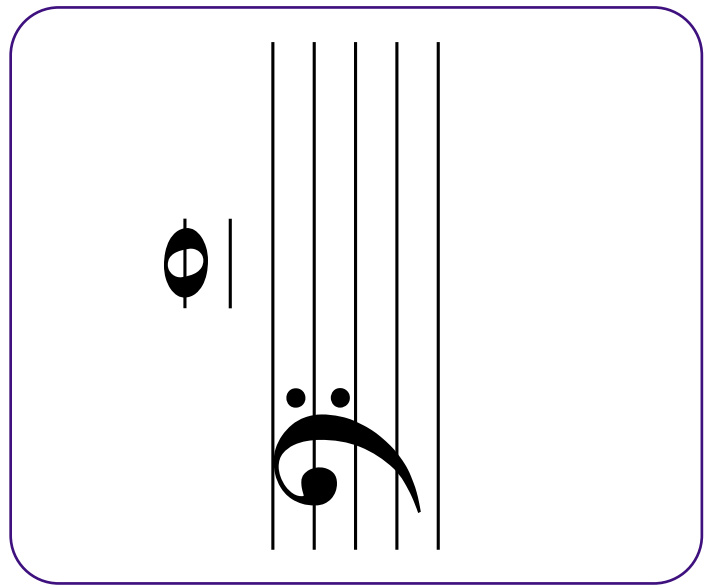
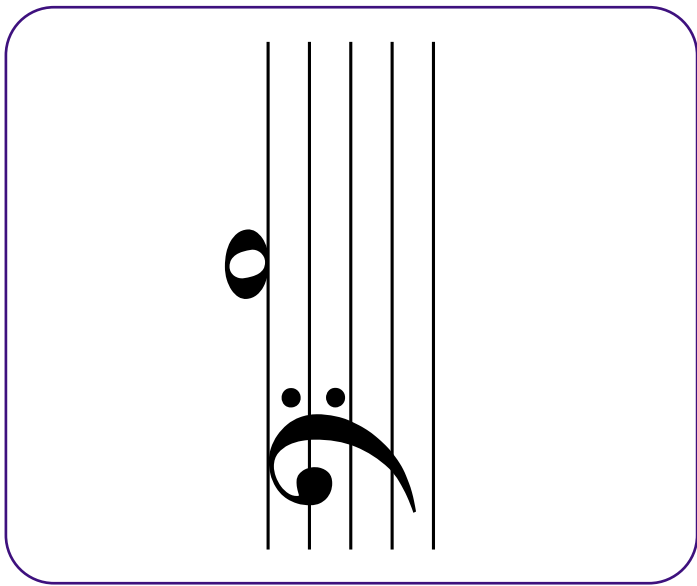
Bass Clef  
**Flash Cards**

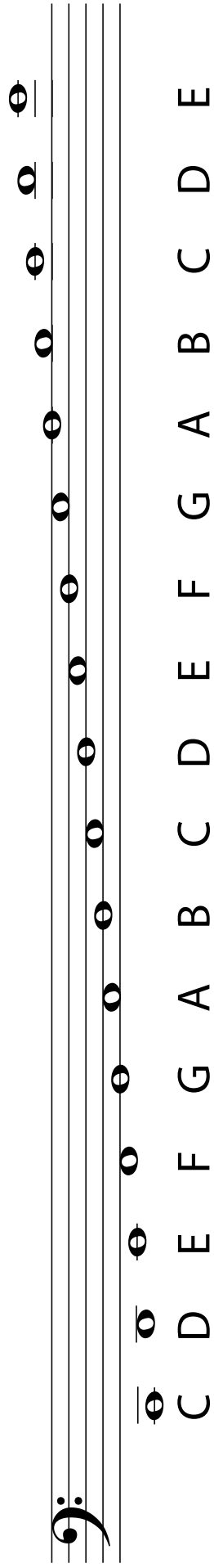


[www.makingmusicfun.net](http://www.makingmusicfun.net)









A musical staff with a bass clef and a key signature of one flat (B-flat). The staff contains 15 quarter notes with the following letter names below them: C, D, E, F, G, A, B, C, D, E, F, G, A, B, C. The notes are positioned on the lines and spaces of the staff as follows: C (below the staff), D (first space), E (first line), F (below the staff), G (first space), A (first line), B (below the staff), C (first space), D (first line), E (first space), F (below the staff), G (first space), A (first line), B (below the staff), C (first space).

